



**INTERMODAL  
COMPLEX  
LES CÈDRES**

**CANADIAN PACIFIC**



*Les Cèdres Intermodal Complex*

THE GROWTH IN IMPORTS OF PRODUCTS MANUFACTURED IN ASIA HAS RESULTED IN MAJOR DEMAND FOR TRANSPORTATION INFRASTRUCTURE. AN INCREASING NUMBER OF CONVENIENCE GOODS, SUCH AS ELECTRONICS AND APPLIANCES, COME FROM ASIA, AND ONCE THEY ARRIVE IN CANADA THEY NEED TO FIND THEIR WAY TO CANADIAN CONSUMERS. CP'S EXISTING FACILITIES IN MONTRÉAL HAVE REACHED FULL CAPACITY, AND NEW INFRASTRUCTURES MUST NOW BE DEVELOPED TO SERVE THE GREATER MONTRÉAL AREA. THE LES CÈDRES **INTERMODAL COMPLEX** CONSTRUCTION PROJECT IS INTENDED TO FILL THIS NEED.

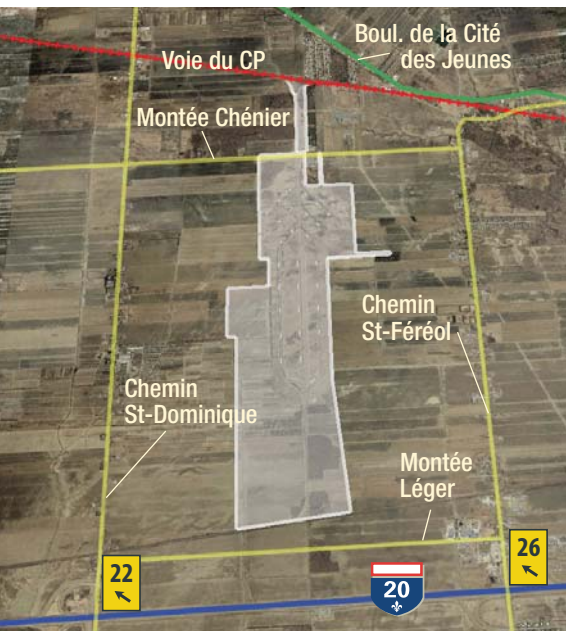
## How will the Les Cèdres **INTERMODAL COMPLEX** operate?

With the implementation of the Les Cèdres Intermodal Complex, CP will be able to concentrate, on a single site, new facilities for transferring, handling, warehousing and distributing manufactured products transported solely in containers. The infrastructure integrates three major functions:

- 1 The intermodal rail terminal, a route that provides efficient, smooth operations for containers that move through it.
- 2 The distribution centre of Consolidated Fastfrate, a commercial trucking company and long-time CP partner that takes care of a large portion of the handling needs for containers that arrive on site by rail and that must be shipped by truck.
- 3 Distribution centres operated by CP and used by companies that distribute large quantities of merchandise to the Greater Montréal area and throughout Québec.

# Choosing **LES CÈDRES**

The site was selected following exhaustive research using decisive location criteria for this type of infrastructure. Criteria included its proximity to Metropolitan Montréal, the CP rail network and the main approach roads. The topography, the dimensions of the site and its relative isolation are also very important. The former site of Soulanges Industries located in Les Cèdres was the only one that fulfilled the criteria. Over 60% of the 300 hectares necessary for the project are already used for industrial purposes. The remaining portion will be made up of neighbouring parcels of land that have been chosen so as to limit the impact on local agriculture.



Location of Les Cèdres Intermodal Complex

## **INTEGRATION** with the community

To fully understand expectations about this project, CP has spent over a year holding meetings with neighbours of the site and residents who live in the area. The information gathered in these exchanges has had a major influence on the development of the project. CP intends to continue these efforts so as to integrate the project successfully in the community.

CP has committed to responding to concerns expressed with a variety of measures. For example, the construction of a direct vehicle access that connects the site to Highway 20 will concentrate traffic in a single place, ensuring that traffic generated by the Intermodal Complex does not circulate on local roadways. Also, the perimeter of the site will be built in a way that properly isolates soil from neighbouring homes.

## **NEXT STEPS** for this project

CP is under federal jurisdiction and must obtain the approval of the Canadian Transportation Agency (CTA) to see the project through. The CTA has to consider requirements related to rail activities and services, the interests of the municipalities concerned by the construction of the infrastructure and its impact on the environment. Before authorizing a project, the CTA must perform an environmental assessment under the Canadian Environmental Assessment Act. This environmental assessment includes public notices and other mechanisms for citizen participation.

In addition to federal requirements, CP is working with three levels of public administration in Québec, the provincial government, the Vaudreuil-Soulanges RCM and the municipality of Les Cèdres, to ensure the integration of the Intermodal Complex project in the municipality of Les Cèdres. The project will go

through the Development Plan amendment process of the RCM, the zoning change process of Les Cèdres and authorization from the Commission de protection du territoire agricole du Québec (CPTAQ). These different efforts should take place over a period of 18 to 24 months. Construction could therefore begin in 2008-2009 and operations could start in 2010-2011.

CP will soon have to perform work on the site to analyze the load bearing capacity of the earth. Neighbours of the site will be kept informed of the work.



**CANADIAN PACIFIC**

Would you like to track the progress of the Les Cèdres Intermodal Complex, or do you have questions about the project? There are several ways to contact us:

by calling Marie-Ève Martin at 450 452-2462    [contact@cplescedres.ca](mailto:contact@cplescedres.ca)    [www.cplescedres.ca](http://www.cplescedres.ca)  
or by visiting our information office open every Wednesday from 1 to 8 p.m. at 1000 Chemin du Fleuve